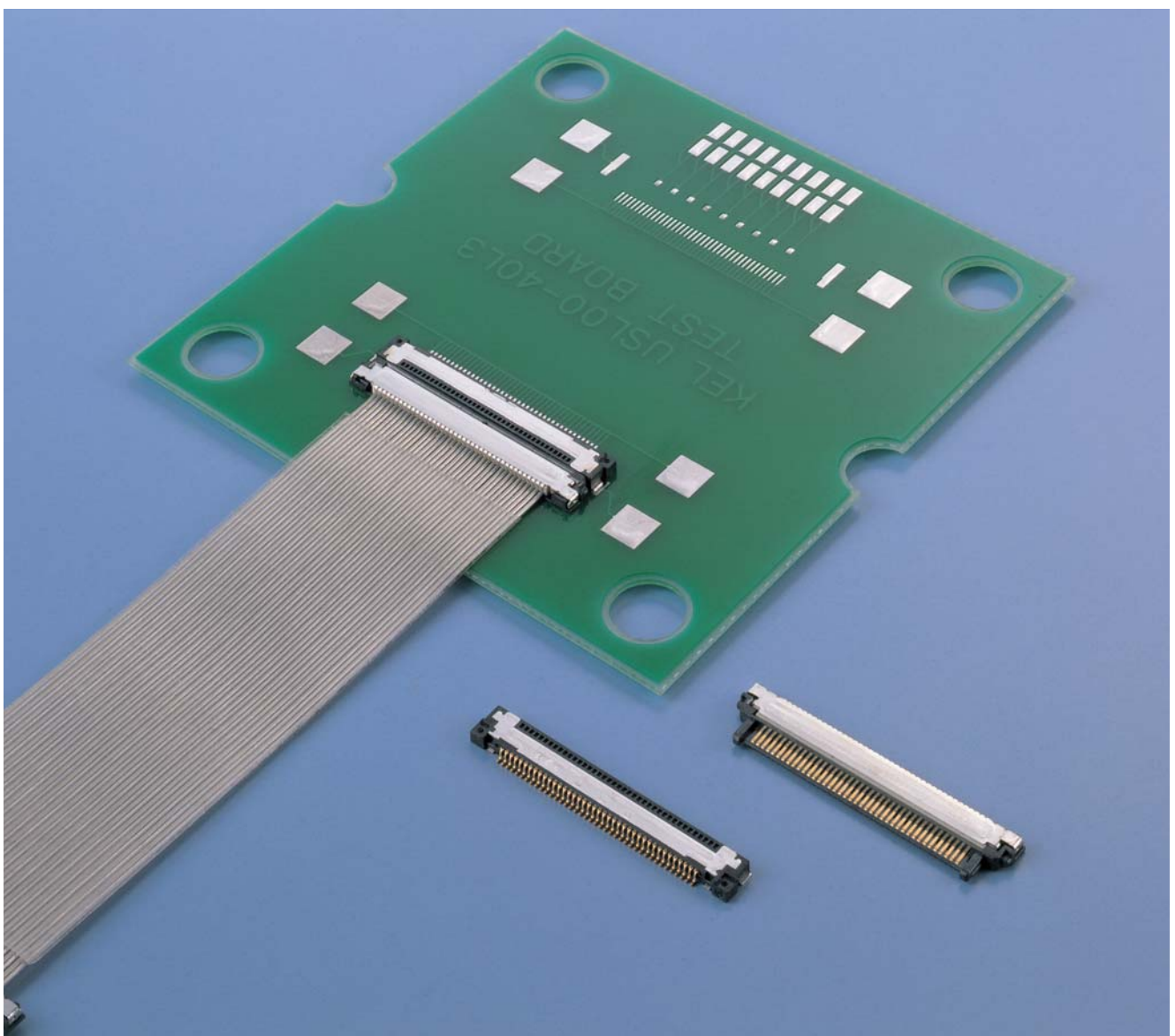
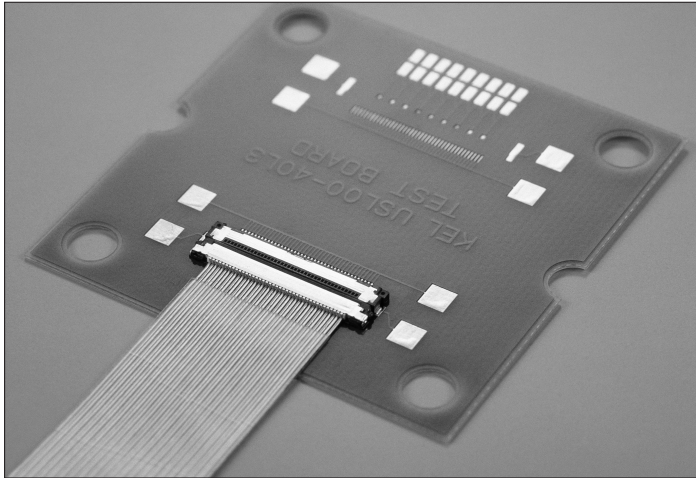


**Ultra Fine Pitch (0.4mm), Ultra Low Profile (1mm)  
IDC Connector for Micro Coaxial Cable (#42 AWG)**

**USL**SERIES





## FEATURES

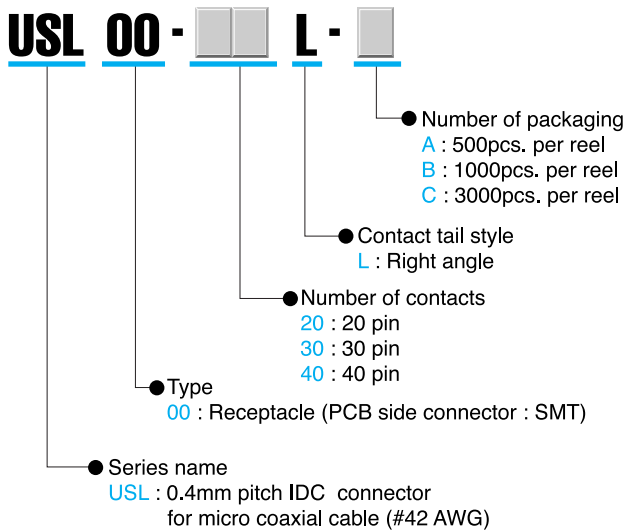
- Ultra fine pitch 0.4mm
- Low profile 1mm
- More than 50% space saving compared to our SSL Series (0.5mm pitch)
- For micro coaxial cable (#42AWG)
- Metal shell on connector provides excellent EMI protection and mechanical strength
- IDC cable assembly (No solder connection)
- RoHS compliance

## SPECIFICATIONS

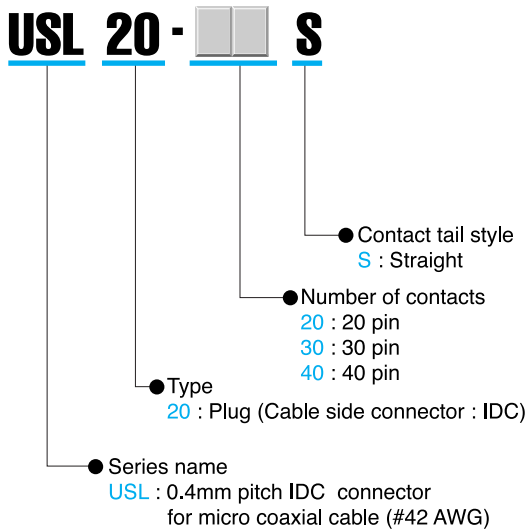
- Insulator material : Glass-filled LCP (UL94V-0), Black
- Contact material : Copper alloy
- Contact plating : Gold over Nickel
- Shell material : Copper alloy
- Shell plating : Tin copper over Nickel
- IDC cover material : Glass-filled LCP (UL94V-0), White
- Current rating : 0.25A per contact
- Contact resistance : 100mΩ max.
- Dielectric withstanding voltage : 200V AC for 1 minute
- Insulation resistance : 100MΩ min. at 250V DC
- Operating temperature : -40°C to +85°C

\* The base and cover for the plug are sold separately. Please contact sales for inquiries and orders.

### ORDER CODE



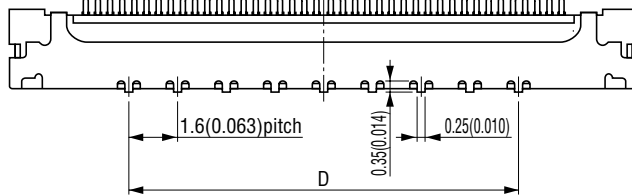
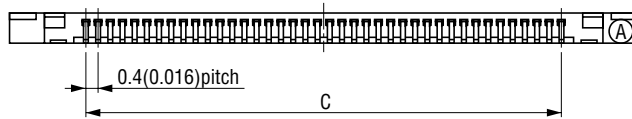
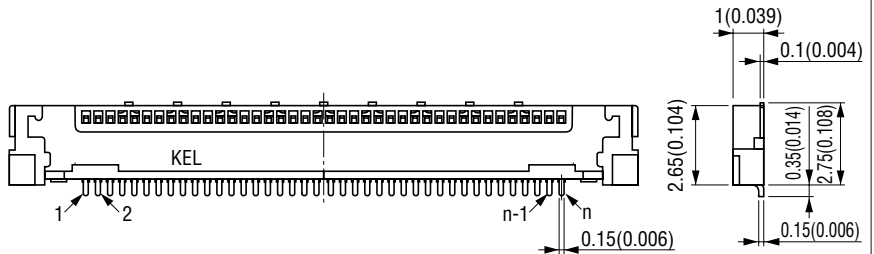
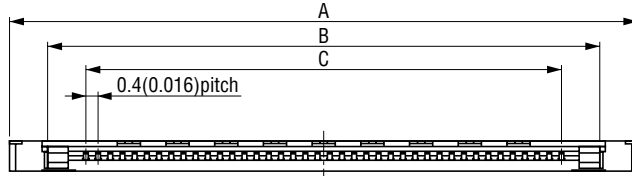
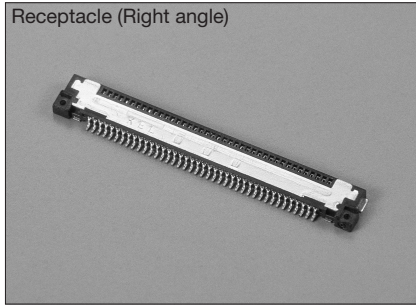
### ORDER CODE



**USL00-□□L-□ (Receptacle, Right angle)**

Unit:mm(inch)

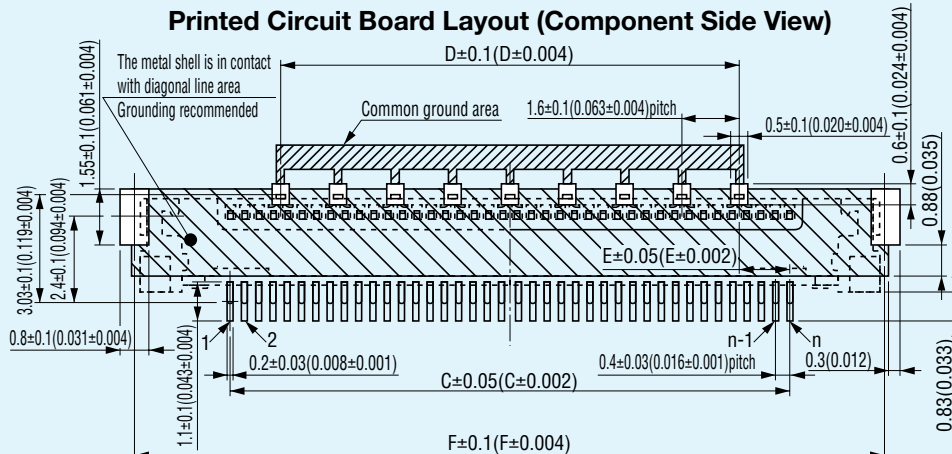
Receptacle (Right angle)


 Packaging style  
 Embossed tape

Part Number	Number of packaging
USL00-□□L-A	500
USL00-□□L-B	1,000
USL00-□□L-C	3,000

**Product Table / Dimensions**

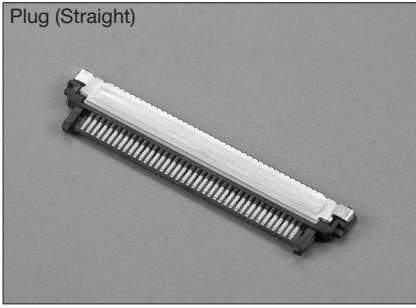
No. of contacts	Part Number	A	B	C	D	E	F
20	USL00-20L-□	12.6 (0.496)	10.1 (0.398)	7.6 (0.299)	6.4 (0.252)	0.6 (0.024)	12.8 (0.504)
30	USL00-30L-□	16.6 (0.654)	14.1 (0.555)	11.6 (0.457)	9.6 (0.378)	1.0 (0.039)	16.8 (0.661)
40	USL00-40L-□	20.6 (0.811)	18.1 (0.713)	15.6 (0.614)	12.8 (0.504)	1.4 (0.055)	20.8 (0.819)

**Printed Circuit Board Layout (Component Side View)**


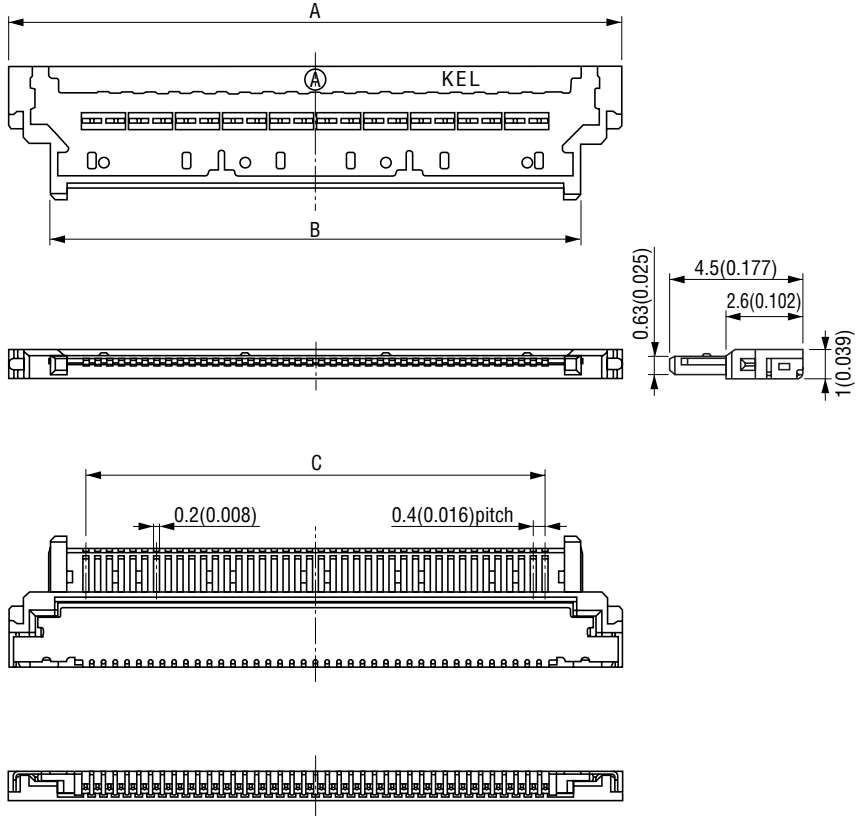
"n" is number of contacts.

### USL20-□□S (Plug, IDC)

Plug (Straight)



Unit:mm(inch)



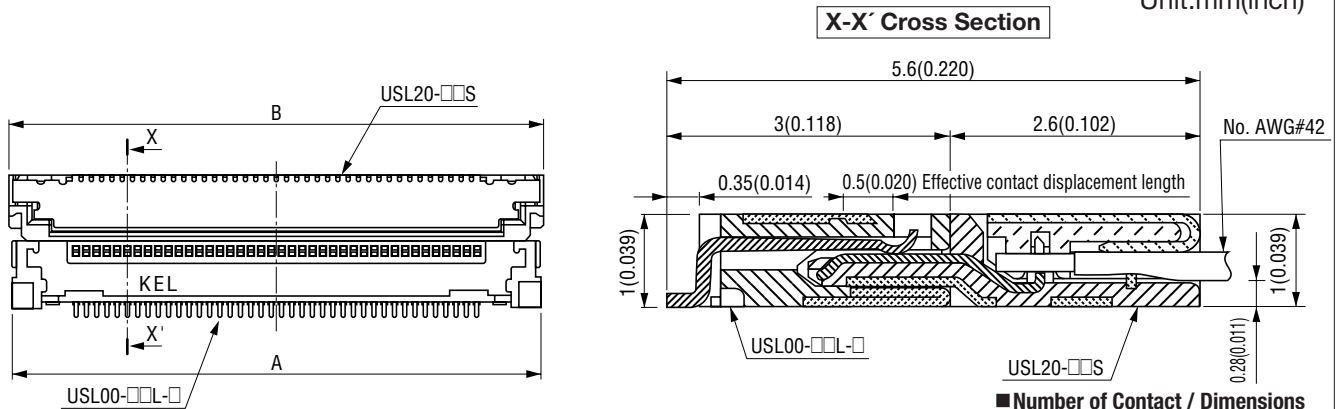
Packaging style
Tray

**Product Table / Dimensions**

No. of contacts	Part Number	A	B	C	Number of packaging
20	USL20-20S	12.8 (0.504)	10.1 (0.398)	7.6 (0.299)	160
30	USL20-30S	16.8 (0.661)	14.1 (0.555)	11.6 (0.457)	120
40	USL20-40S	20.8 (0.819)	18.1 (0.713)	15.6 (0.614)	100

### Mating Variation

Unit:mm(inch)


**Number of Contact / Dimensions**

No. of contact	A	B
20	12.6 (0.496)	12.8 (0.504)
30	16.6 (0.654)	16.8 (0.661)
40	20.6 (0.811)	20.8 (0.819)

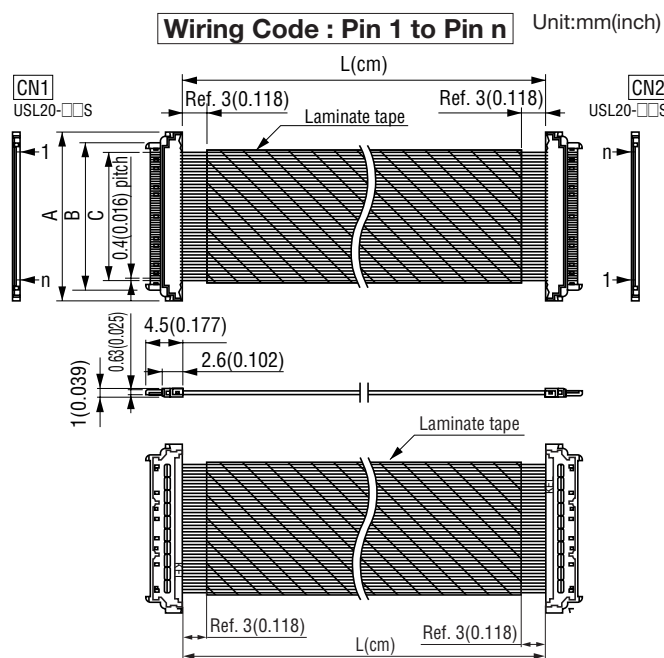
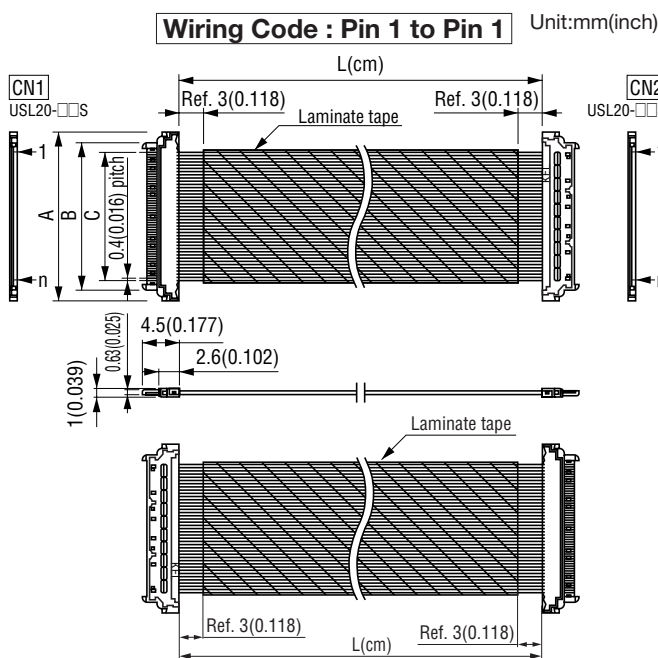
**ORDER CODE**

**USL 20- [ ] SS- [ ] . [ ] - [ ] ( [ ] )**

- Series name  
USL : 0.4mm pitch IDC connector for micro coaxial cable (#42 AWG)
- Type  
20 : Plug (Cable side connector)  
30 : 30 pin
- Number of contacts  
20 : 20 pin 40 : 40 pin  
30 : 30 pin
- Cable length (cm)  
L dimension  
(Example : 013.5=13.5cm)
- Connector style (Left side, CN1)  
S : Straight
- Connector style (Right side, CN2)  
S : Straight
- Wiring code  
B : Pin 1 to Pin 1  
C : Pin 1 to Pin n
- Laminated tape  
Omit : Without tape  
H : With tape
- Quantity  
(A) : 1 to 9pcs  
(B) : 10 to 49pcs  
(C) : 50 to 99pcs  
(D) : 100pcs or more

\*Applicable cable length : 4 to 100cm  
Minimum cable length for USL20-□□SS-□□□□-□-□-□ : 7cm

**CABLE ASSEMBLY STYLE**



\* "n" is number of contacts.

\* "n" is number of contacts.

**Product Table / Dimensions**

No. of contacts	Part Number	A	B	C
20	USL20-20SS-□□□□-□-□-□(□)	12.8 (0.504)	10.1 (0.398)	7.6 (0.299)
30	USL20-30SS-□□□□-□-□-□(□)	16.8 (0.661)	14.1 (0.555)	11.6 (0.457)
40	USL20-40SS-□□□□-□-□-□(□)	20.8 (0.819)	18.1 (0.713)	15.6 (0.614)

**Product Table / Dimensions**

No. of contacts	Part Number	A	B	C
20	USL20-20SS-□□□□-□-□-□(□)	12.8 (0.504)	10.1 (0.398)	7.6 (0.299)
30	USL20-30SS-□□□□-□-□-□(□)	16.8 (0.661)	14.1 (0.555)	11.6 (0.457)
40	USL20-40SS-□□□□-□-□-□(□)	20.8 (0.819)	18.1 (0.713)	15.6 (0.614)

\*Please contact your local sales office for inquiries regarding cable length and tolerance.

\*Laminated tape is designed to be a little wider than the cable width. Please contact your local sales office for further details.

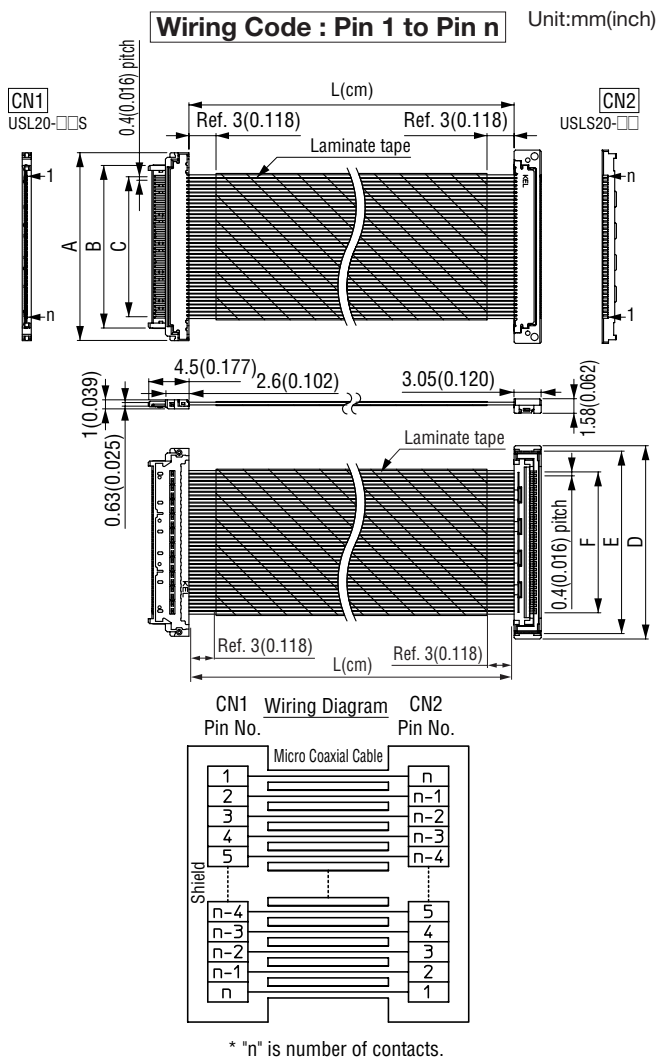
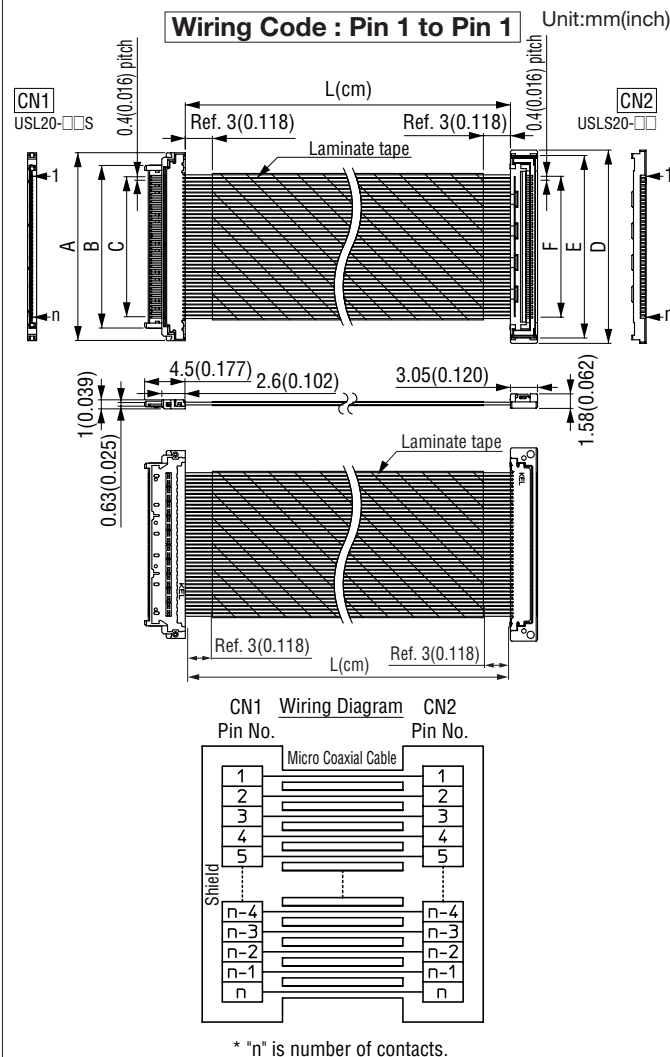
**ORDER CODE**

**USL+S 20 -** [ ] - [ ] . [ ] - [ ] [ ] ( [ ] )

- **Series name**  
USL+S : 0.4mm pitch IDC connector for micro coaxial cable (#42 AWG)  
Left side connector, CN1 / USL20 series  
Right side connector, CN2 / USLS20 series
- **Type**  
20 : Plug (Cable side connector)
- **Number of contacts**  
20 : 20 pin  
30 : 30 pin
- **Cable length (cm)**  
L dimension  
(Example : 013.5=13.5cm)
- **Wiring code**  
B : Pin 1 to Pin 1  
C : Pin 1 to Pin n
- **Laminated tape**  
Omit : Without tape  
H : With tape
- **Quantity**  
(A) : 1 to 9pcs  
(B) : 10 to 49pcs  
(C) : 50 to 99pcs  
(D) : 100pcs or more

\*Applicable cable length : 4 to 100cm  
Minimum cable length for USL+S20-□□□□□□□□-BH(□) : 7cm

**CABLE ASSEMBLY STYLE**



**Product Table / Dimensions**

No. of contacts	Part Number	A	B	C	D	E	F
20	USL+S20-20-□□□□□□-B□(□)	12.8 (0.504)	10.1 (0.398)	7.6 (0.299)	13.4 (0.528)	12.0 (0.472)	7.6 (0.299)
30	USL+S20-30-□□□□□□-B□(□)	16.8 (0.661)	14.1 (0.555)	11.6 (0.457)	17.4 (0.685)	16.0 (0.630)	11.6 (0.457)

**Product Table / Dimensions**

No. of contacts	Part Number	A	B	C	D	E	F
20	USL+S20-20-□□□□□□-C□(□)	12.8 (0.504)	10.1 (0.398)	7.6 (0.299)	13.4 (0.528)	12.0 (0.472)	7.6 (0.299)
30	USL+S20-30-□□□□□□-C□(□)	16.8 (0.661)	14.1 (0.555)	11.6 (0.457)	17.4 (0.685)	16.0 (0.630)	11.6 (0.457)

\*Please contact your local sales office for inquiries regarding cable length and tolerance.

\*Laminated tape is designed to be a little wider than the cable width. Please contact your local sales office for further details.